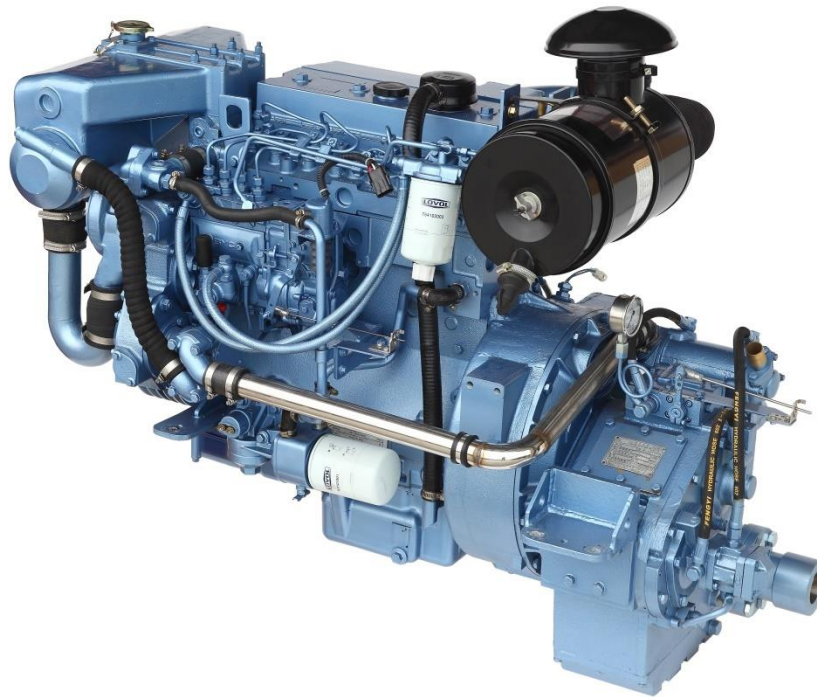


## **Marine diesel engine - MODEL: DKWL4M**



**Use:** Propulsion engine

**Power:** 52 kW at 2200 rpm.

**Number of cylinders :** 4 in line.

**Intake:** Naturally aspirated.

**Cycle:** 4 stroke

**Compression ratio:** 16.5:1

**Motor rotation:** anti-clockwise, view from stern.

**Injection System:** direct.

**Injection Pump:** PB in line type, Bosch, with mechanical RSV type regulator

**Drive coupling :** SAE 3

**Electrical circuit:** 24 V, DC

**Instrumentation:** Instrument panel including rev. counter, pressure, oil temperature and engine water temperature gauges, battery charge, malfunction alarm for the previous parameters, auxiliary pump operation and wiring extension of different sizes.

**Cooling:** Closed freshwater and oil circuit. Open seawater circuit with heat exchanger for fresh water, cooled exhaust manifold and cooler for the transmission oil.

**Sump drain pump**

**Crankshaft pulley** 4 trapezoidal channels, type "B".

**Dimensions L x W x H (mm):**

Without transmission: 957 X 700 X 1120

With transmission: 1270 X 700 X 1120

**Weight:**

Weight without transmission: 500 Kg

Weight with transmission: 640 Kg

**Other applications for this engine** : as a generator, for generating electricity on board vessels or on land installations.